

SDM Series Attritors Designed For Small Media Applications

A Hybrid Design

The SDM line from Union Process is a hybrid design that couples the grinding features of a batch Attritor with the performance features of a small media mill.

The Advantages of a Batch Attritor . . .

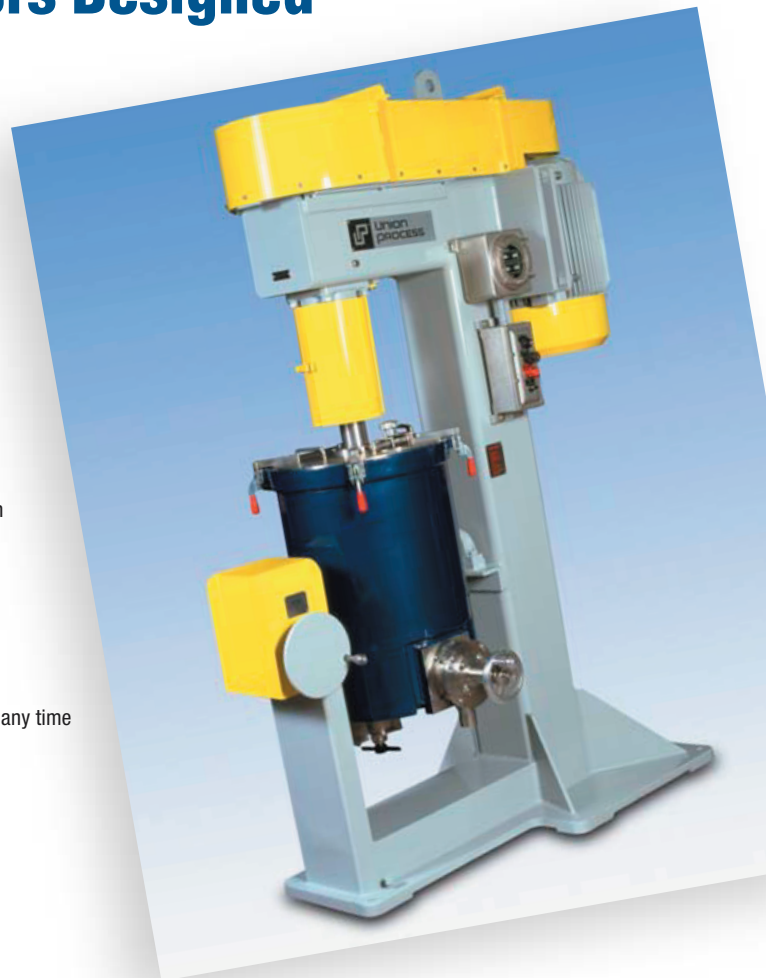
SDM Attritors share many of the same advantages of batch Attritors including:

- No expensive shaft seals to maintain
- Simple operation
- Energy efficient
- No premixing requirement
- Minimum maintenance required
- Rugged construction
- Material can be inspected and additions can be made at any time during the grinding cycle
- Compact design
- No special foundation needed

. . . with the Added Features Necessary to Accomplish Small Media Milling

Additional advantages of the SDM design are:

- Specially designed shaft and Delta Discs configured to accommodate small media milling (using mini media from 0.25 to 3 mm)
- High shaft speed (from 400 to 4000 RPM) to energize small media



Model 10-SDM



visit www.unionprocess.com

Laboratory Models



01-HDDM

01-HDDM

- Designed for small media from .10mm to 2mm
- Features a mechanical drive or an electronic variable speed drive system
- Runs at RPMs from 1000 to 4200
- Optional side discharge valve and/or bottom plug valve (both available for stainless steel tanks only)
- Can be purchased as a combination model with 01-HD (referred to as 01-HD/HDDM)

05-SDM and 1-SDM

- Designed for small media from .25mm to 3mm
- Features a mechanical drive or an electronic variable speed drive system
- Runs at RPMs from 300 to 2000
- Includes discharge valve and media retaining screen



1-SDM
05-SDM (not pictured)

Production Models

Standard Features

- Tank tilts for easy cleaning
- Includes side slurry discharge with media retaining screen
- Tank jacketed for efficient cooling
- Bottom media discharge valve

Accessories/Options

Tank Options

- Stainless Steel, Tefzel®-coated stainless steel, polyurethane, alumina (zirconium oxide, silicon nitride and silicon carbide— 01-HDDM lab model only)

Agitator Disc Options

- Hardened tool steel, hardened stainless steel, plastic, zirconium oxide

Torque Meter

- Monitors precise energy consumption which is used for determining grinding time and for added quality control

ENGINEERING DATA

ATTRITOR MODEL	01-HDDM 750cc	01-HDDM 1400cc	05-SDM	1-SDM	5-SDM	10-SDM	15-SDM	20-SDM	30-SDM
Tank Capacity	750cc	1400cc	1.3 gal	2.9 gal	14 gal	28 gal	42 gal	61 gal	83 gal
Slurry Capacity	125-175cc	250-350cc	0.37 gal	0.6-0.8 gal	4 gal	8 gal	12 gal	16 gal	24 gal
Media Volume	280cc	560cc	0.60 gal	1.3 gal	6.5 gal	13 gal	19.5 gal	26 gal	39 gal
HP	1/2	1/2	3	5	15	25	40	50	75
Height	39"	39"	46"	60"	88"	91"	97"	104"	110"
Floor Space (W x D)	17" x 38"	17" x 38"	28" x 48"	32" x 54"	36" x 65"	39" x 70"	44" x 76"	48" x 78"	52" x 81"
Machine Wt (lbs)	240	240	700	1600	2600	3700	4100	5000	6200
Approx Operating Wt (lbs)	250	260	750	1700	2950	4200	5050	6300	8100

– Lab Machines –

– Production Machines –

GRINDING MEDIA

Union Process stocks a full line of the highest quality grinding for small media applications. Please request our comprehensive Grinding Media data sheet.



© 2006 Union Process, Inc. All rights reserved.

Union Process, Inc. reserves the right to make improvements or change machine and equipment designs at any time without notice. Information contained herein is accurate to the best of our knowledge, but our suggestions and recommendations cannot be guaranteed because the conditions of use are beyond our control. Photos shown may include options that are not standard on that particular machine.



1925 Akron-Peninsula Road, Akron, Ohio 44313-4896
Phone: (330) 929-3333 • Fax: (330) 929-3034
E-mail: unionprocess@unionprocess.com
www.unionprocess.com

visit www.unionprocess.com